

# Knowledge is Key



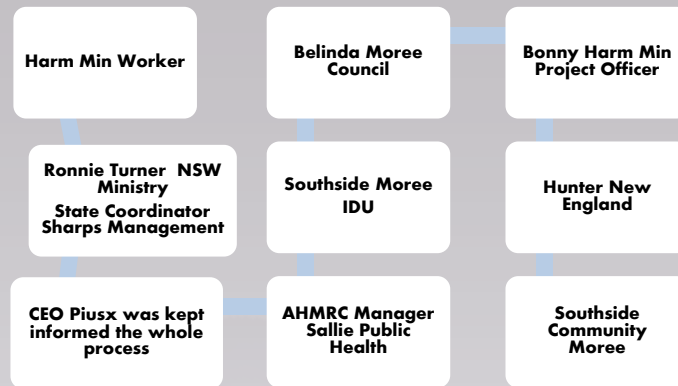
**By Bonny Briggs**

- Bonny Briggs Harm Minimisation Project Officer
- Aboriginal Health & Medical Research Council is the peak voice of Aboriginal health in NSW, and represents the Aboriginal Community Controlled Health Services (ACCHSs).
- My job is to work with all 49 ACCHSs

# Introduction

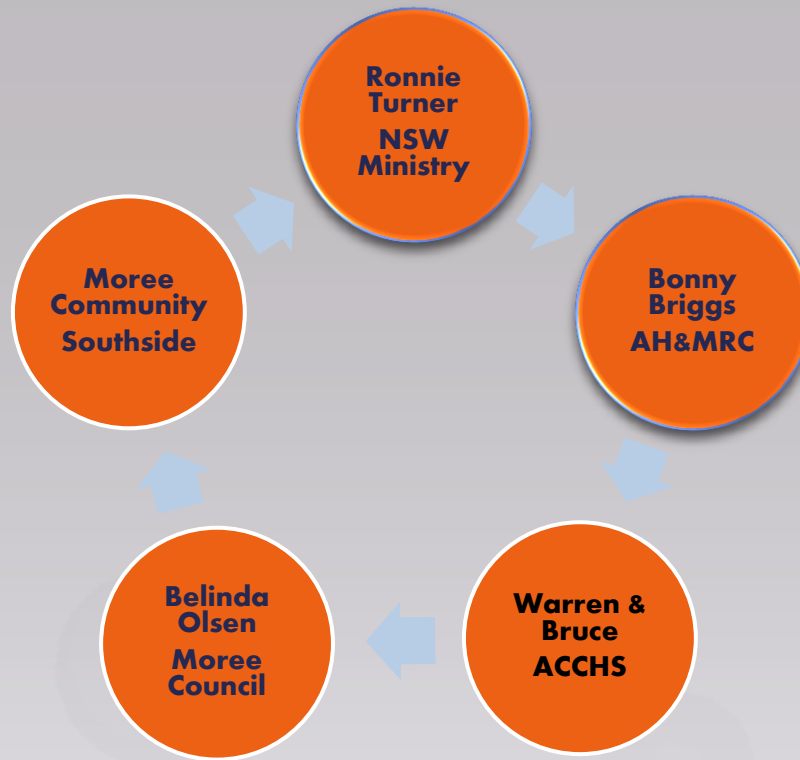
- **Presentation on importance of local Aboriginal knowledge in implementing harm minimisation programs**
- **Use the example of sharps disposal at Moree**
- **Provide some tips on working with communities.**

# **Overview**



- Southside Moree – community concerned about safety & wellbeing of residents
- NSW Ministry – focus on working with local council around disposal of sharps
- Local Health District – want to increase harm minimisation strategies
- Pius X AMS & AH&MRC – want to improve health outcomes for local community
- Moree Council – reduce inappropriate waste disposal

# Stakeholders



**Sharps Disposal for Moree who still do not have bins allocated even though the data which Moree council are using is collected**

- The evidence is in Aboriginal people have 4 times higher rates of HEP C
- We know that there has been a 13% increase of HIV for Indigenous injecting Drug Users
- Then what can we do to ensure better outcomes for the future of one of the most stigmatised and marginalised groups in Australia?

**Local Knowledge**

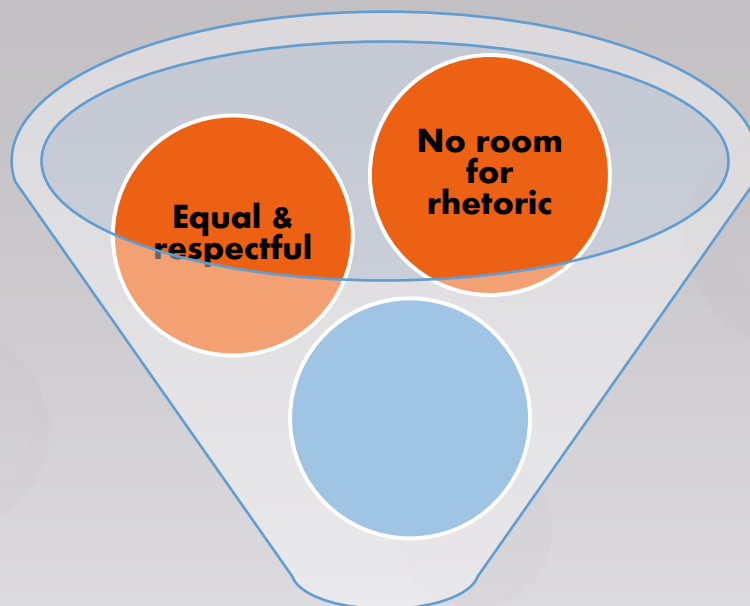
- Knowledge of relationships in the town – between community & Council, Police, local health services etc
- Knowledge of Elders and leaders, people of influence and where barriers may be
- Already have trust of the community, which otherwise would take a long time to develop
- Understand community feelings around IDU (example of Bruce)?

## **Local Knowledge**

- ❑ Plan a site visit to local community
- ❑ When organising a community event for hard to reach populations, it is essential to collaborate where ever possible
- ❑ Talk to people at the local level who regularly works with Aboriginal people who inject drugs. In Moree this was the LHD staff, Aboriginal AOD workers, Pius X workers.
- ❑ At Moree we held a community event. This community said it was the first time they had ever had an event the park which hosted the event has no equipment nor does it have any trees
- ❑ Invite different orgs if appropriate, eg we invited a Sharps disposal person - this was appropriate due to fear and the growing evidence around inappropriate dumping

## Engaging the community





**PARTNERSHIPS**

